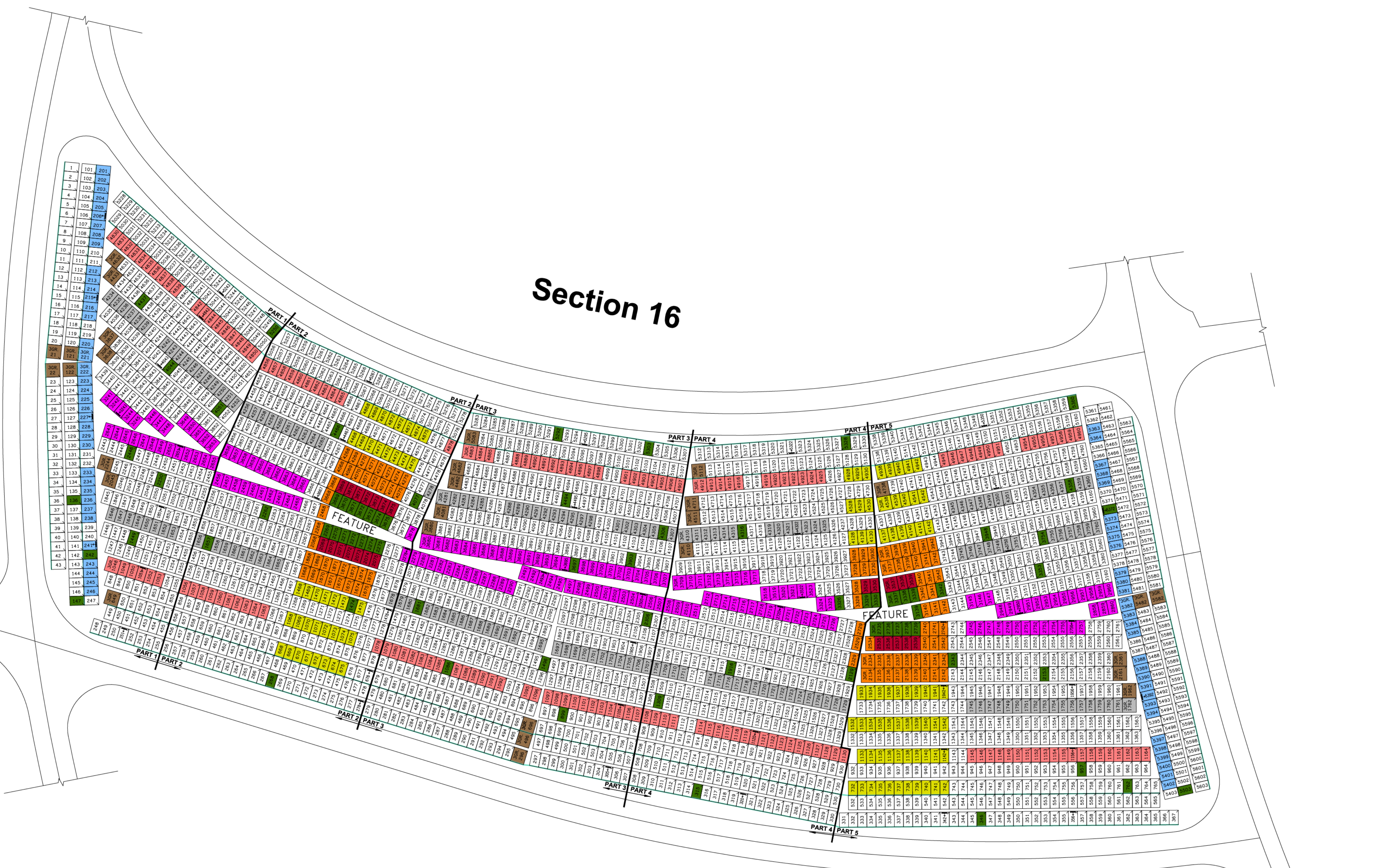


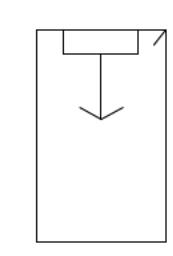
Section 8



Section 16

SECTION NOTES

- 1 THE LOT NUMBER IS PLACED IN THE UPPER RIGHT HAND CORNER OF THE LOT AS YOU FACE THE LOT AND IS INDICATED AS A SLASH OR TICK MARK.
- 2 THE LOCATION OF GRAVE MARKERS ARE SHOWN BELOW WITH ARROW INDICATING DIRECTION GRAVE MARKERS WILL FACE.



- 3 ALL LOTS ARE 2-GRAVE LOTS UNLESS OTHERWISE NOTED ON THE DRAWING.
- 4 ALL 2-GRAVE LOTS ARE 6'-4" X 10.0'
ALL 3-GRAVE LOTS ARE 9'-6" X 10.0'

LEGEND

- 3675 PREMIUM FEATURE LOT
- 3875 FEATURE LOT
- 3077 TREE/LANDSCAPE LOCATIONS
- 3GR, 3880 3 GRAVE LOT
- 288 488 FLUSH MARKERS ONLY
- 205 28"-36" MONUMENTS
- 3305 28"-42" MONUMENTS
- 2733 28"-60" MONUMENTS
- 1904 28"-72" MONUMENTS
- 2856 PILLOW MARKERS

MONUMENT NOTES

- 1 MONUMENT LOTS ARE RESTRICTED TO THOSE AS SHOWN ON SECTION MAP.
- 2 ALL MONUMENT LOTS ARE EITHER 2-GRAVE OR 3-GRAVE LOTS OTHER CONFIGURATIONS WILL BE DETERMINED AS REQUESTED.
- 3 HEIGHT OF MONUMENTS ON DESIGNATED MONUMENT LOTS CAN VARY DEPENDING ON NUMBER OF GRAVES ASSOCIATED WITH MONUMENT REQUESTED.
- 4 ALL FOUNDATIONS ARE LOCATED WITHIN LOTS.

LOT SUMMARY

2443	2-GRAVE LOTS
43	3-GRAVE LOTS
23	2-GRAVE PREMIUM FEATURE LOTS
1	3-GRAVE PREMIUM FEATURE LOTS
89	2-GRAVE FEATURE LOTS
4	3-GRAVE FEATURE LOTS
2513	TOTAL LOTS
5254	TOTAL GRAVES

No.	DATE	REVISION

OFFICE OF DEVELOPMENT
Catholic Cemeteries Association
10000 Miles Ave., Cleveland, Ohio
44105
216.641.7575
FAX: 216.641.0212

All Saints Cemetery - Northfield, Ohio
Section 17
Whole Section

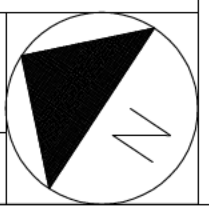
SHEET NAME:

DATE: 2.14.2006

PROJECT No.:

A1 SECTION 17 - Whole Section

1"=40'





SECTION NOTES

- THE LOT NUMBER IS PLACED IN THE UPPER RIGHT HAND CORNER OF THE LOT AS YOU FACE THE LOT AND IS INDICATED AS A SLASH OR TICK MARK.
- THE LOCATION OF GRAVE MARKERS ARE SHOWN BELOW WITH ARROW INDICATING DIRECTION GRAVE MARKERS WILL FACE.
- ALL LOTS ARE 2-GRAVE LOTS UNLESS OTHERWISE NOTED ON THE DRAWING.
- ALL 2-GRAVE LOTS ARE 6'-4" X 10.0'
ALL 3-GRAVE LOTS ARE 9'-6" X 10.0'

LEGEND

- PREMIUM FEATURE LOT
- FEATURE LOT
- TREE/LANDSCAPE LOCATIONS
- 3 GRAVE LOT
- 288 488 FLUSH MARKERS ONLY
- 205 28"-36" MONUMENTS
- 3305 28"-42" MONUMENTS
- 2733 28"-60" MONUMENTS
- 1904 28"-72" MONUMENTS
- 2856 PILLOW MARKERS

MONUMENT NOTES

- MONUMENT LOTS ARE RESTRICTED TO THOSE AS SHOWN ON SECTION MAP.
- ALL MONUMENT LOTS ARE EITHER 2-GRAVE OR 3-GRAVE LOTS OTHER CONFIGURATIONS WILL BE DETERMINED AS REQUESTED.
- HEIGHT OF MONUMENTS ON DESIGNATED MONUMENT LOTS CAN VARY DEPENDING ON NUMBER OF GRAVES ASSOCIATED WITH MONUMENT REQUESTED.
- ALL FOUNDATIONS ARE LOCATED WITHIN LOTS.

LOT SUMMARY

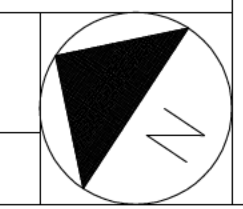
420	2-GRAVE LOTS
14	3-GRAVE LOTS
0	PREMIUM FEATURE LOTS
0	FEATURE LOTS
434	TOTAL LOTS
882	TOTAL GRAVES

No.	DATE	REVISION

OFFICE OF DEVELOPMENT
Catholic Cemeteries Association
10000 Miles Ave., Cleveland, Ohio
44105
216.641.7575
FAX: 216.641.0212

All Saints Cemetery - Northfield, Ohio
Section 17
Part 1

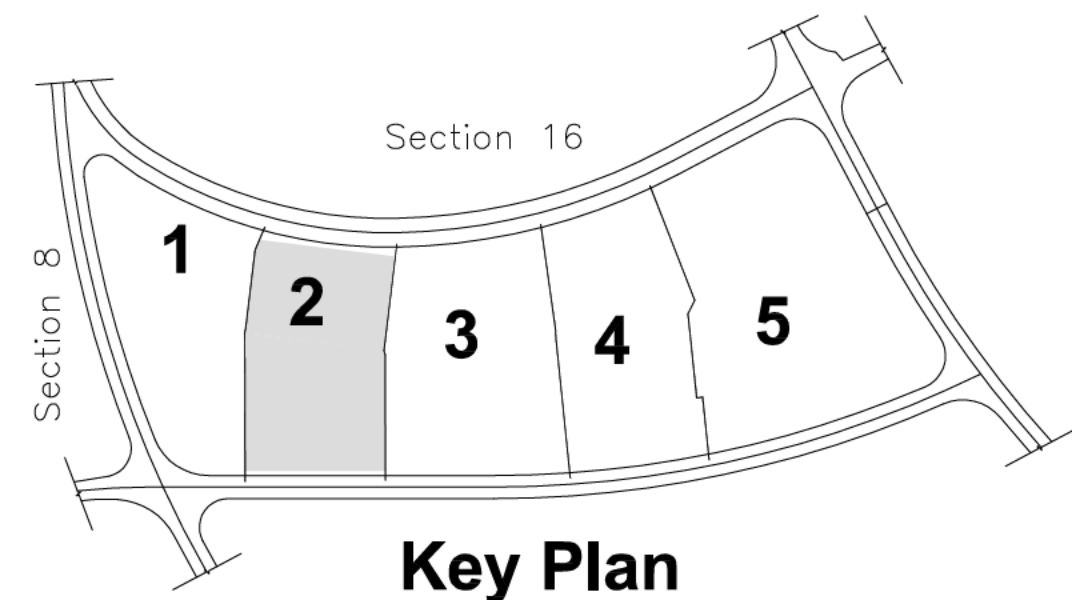
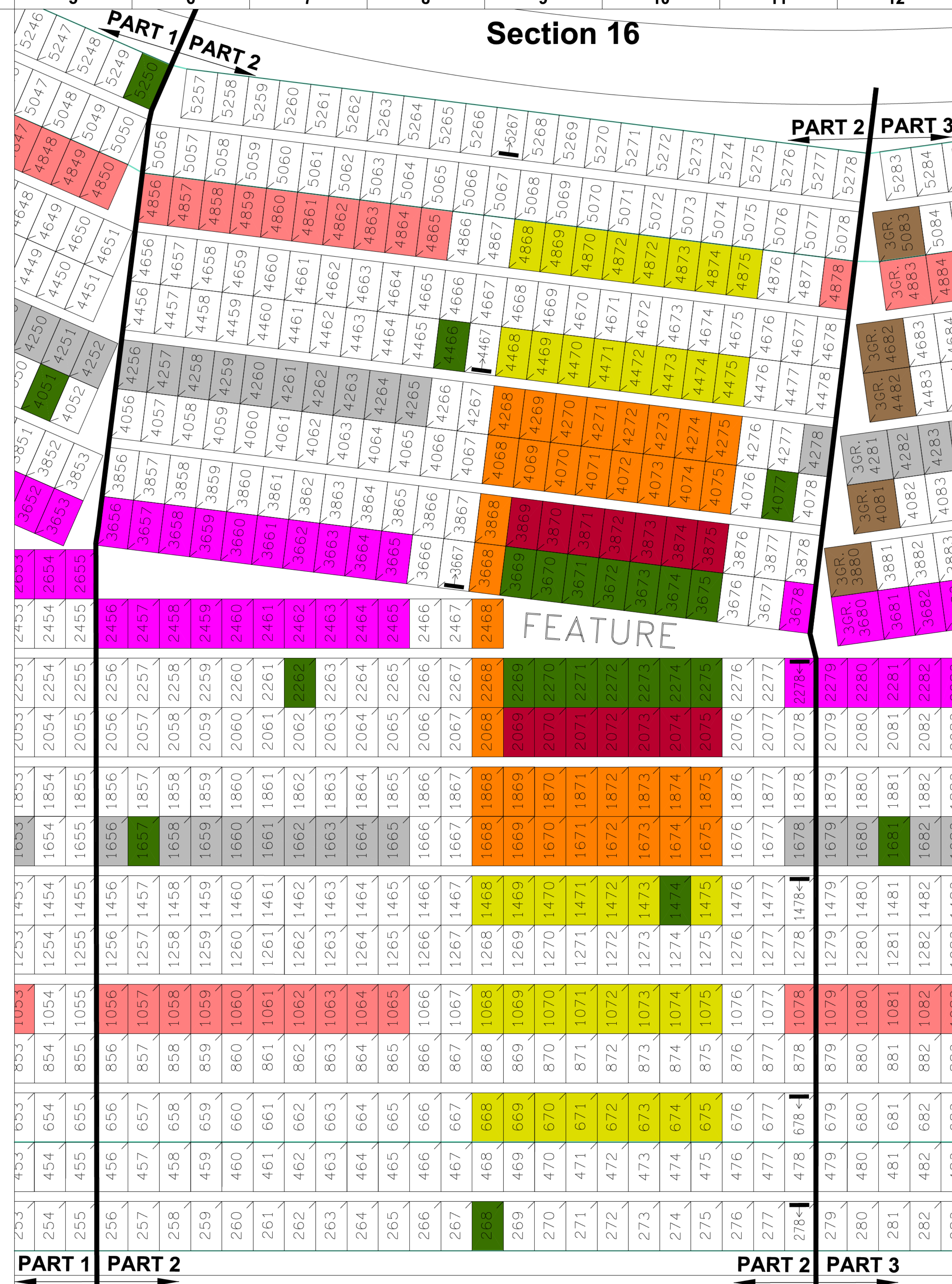
SHEET NAME:
DATE: 2.14.2006
PROJECT No.:



A1 SECTION 17 - PART 1

1"=20'

Section 16



SECTION NOTES

- THE LOT NUMBER IS PLACED IN THE UPPER RIGHT HAND CORNER OF THE LOT AS YOU FACE THE LOT AND IS INDICATED AS A SLASH OR TICK MARK.
- THE LOCATION OF GRAVE MARKERS ARE SHOWN BELOW WITH ARROW INDICATING DIRECTION GRAVE MARKERS WILL FACE.

↓
- ALL LOTS ARE 2-GRAVE LOTS UNLESS OTHERWISE NOTED ON THE DRAWING.
- ALL 2-GRAVE LOTS ARE 6'-4" X 10.0'
ALL 3-GRAVE LOTS ARE 9'-6" X 10.0'

LEGEND

- PREMIUM FEATURE LOT
- FEATURE LOT
- TREE/LANDSCAPE LOCATIONS
- 3 GRAVE LOT
- FLUSH MARKERS ONLY
- 28"-36" MONUMENTS
- 28"-42" MONUMENTS
- 28"-60" MONUMENTS
- 28"-72" MONUMENTS
- PILLOW MARKERS

MONUMENT NOTES

- MONUMENT LOTS ARE RESTRICTED TO THOSE AS SHOWN ON SECTION MAP.
- ALL MONUMENT LOTS ARE EITHER 2-GRAVE OR 3-GRAVE LOTS OTHER CONFIGURATIONS WILL BE DETERMINED AS REQUESTED.
- HEIGHT OF MONUMENTS ON DESIGNATED MONUMENT LOTS CAN VARY DEPENDING ON NUMBER OF GRAVES ASSOCIATED WITH MONUMENT REQUESTED.
- ALL FOUNDATIONS ARE LOCATED WITHIN LOTS.

LOT SUMMARY

379	2-GRAVE LOTS
0	3-GRAVE LOTS
14	PREMIUM FEATURE LOTS
37	FEATURE LOTS
430	TOTAL LOTS
860	TOTAL GRAVES

No.	DATE	REVISION

OFFICE OF DEVELOPMENT
Catholic Cemeteries Association
10000 Miles Ave., Cleveland, Ohio
44105
216.641.7575
FAX: 216.641.0212

All Saints Cemetery - Northfield, Ohio
Section 17
Part 2

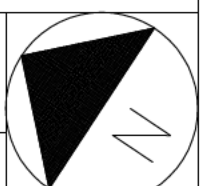
SHEET NAME:

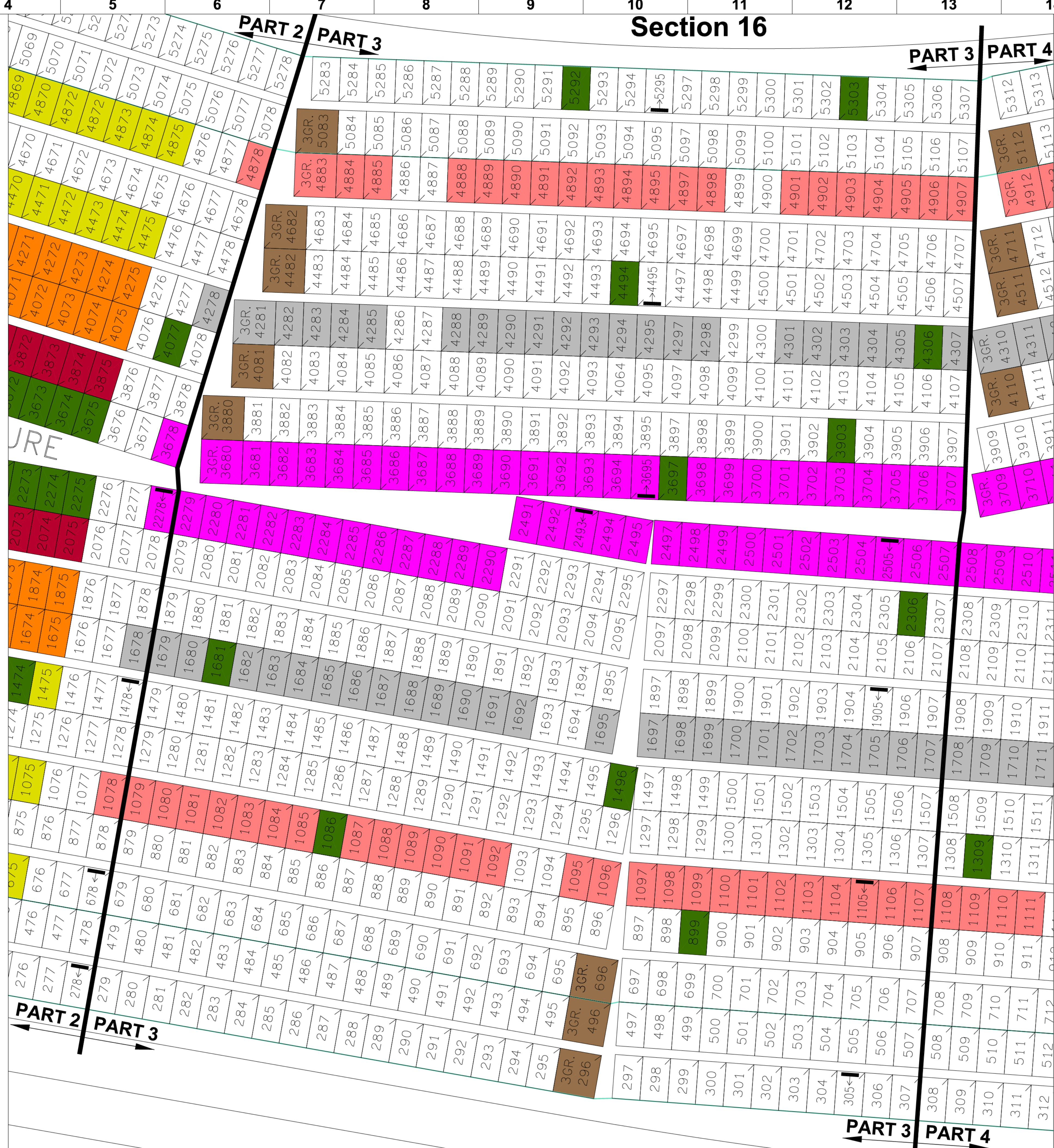
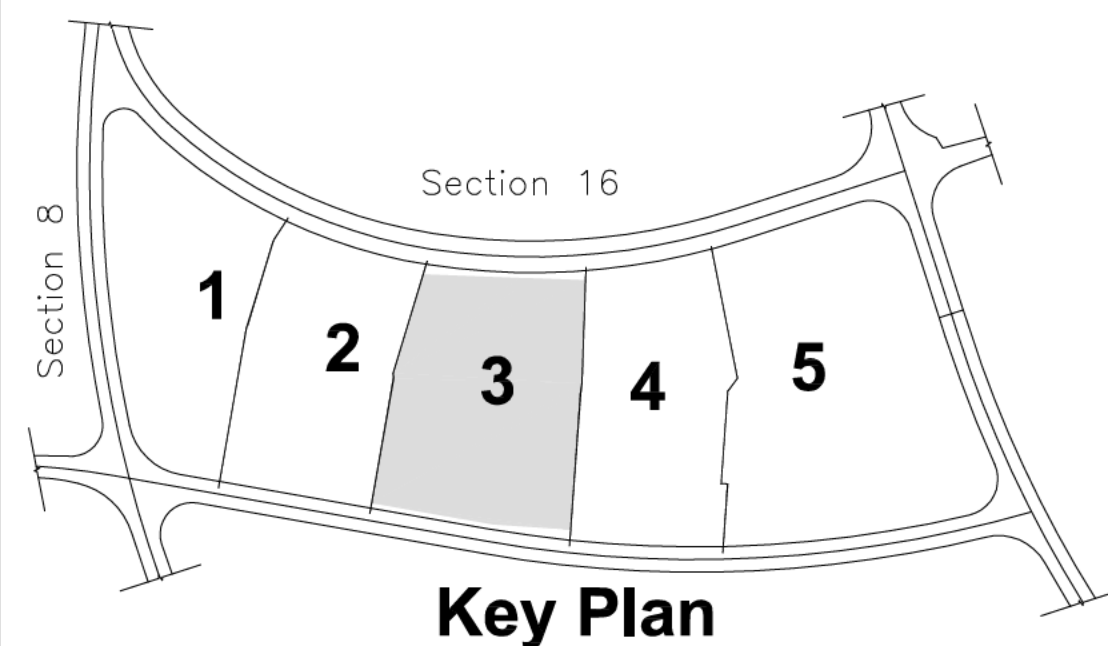
DATE: 2.14.2006

PROJECT No.:

A1 SECTION 17 - PART 2

1"=20'





SECTION NOTES

- THE LOT NUMBER IS PLACED IN THE UPPER RIGHT HAND CORNER OF THE LOT AS YOU FACE THE LOT AND IS INDICATED AS A SLASH OR TICK MARK.
- THE LOCATION OF GRAVE MARKERS ARE SHOWN BELOW WITH ARROW INDICATING DIRECTION GRAVE MARKERS WILL FACE.
- ALL LOTS ARE 2-GRAVE LOTS UNLESS OTHERWISE NOTED ON THE DRAWING.
- ALL 2-GRAVE LOTS ARE 6'-4" X 10.0'
ALL 3-GRAVE LOTS ARE 9'-6" X 10.0'

LEGEND

- PREMIUM FEATURE LOT
- FEATURE LOT
- TREE/LANDSCAPE LOCATIONS
- 3 GRAVE LOT
- FLUSH MARKERS ONLY
- 28"-36" MONUMENTS
- 28"-42" MONUMENTS
- 28"-60" MONUMENTS
- 28"-72" MONUMENTS
- PILLOW MARKERS

MONUMENT NOTES

- MONUMENT LOTS ARE RESTRICTED TO THOSE AS SHOWN ON SECTION MAP.
- ALL MONUMENT LOTS ARE EITHER 2-GRAVE OR 3-GRAVE LOTS OTHER CONFIGURATIONS WILL BE DETERMINED AS REQUESTED.
- HEIGHT OF MONUMENTS ON DESIGNATED MONUMENT LOTS CAN VARY DEPENDING ON NUMBER OF GRAVES ASSOCIATED WITH MONUMENT REQUESTED.
- ALL FOUNDATIONS ARE LOCATED WITHIN LOTS.

LOT SUMMARY

507	2-GRAVE LOTS
11	3-GRAVE LOTS
0	PREMIUM FEATURE LOTS
0	FEATURE LOTS
518	TOTAL LOTS
1047	TOTAL GRAVES

No.	DATE	REVISION

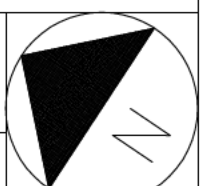
OFFICE OF DEVELOPMENT
Catholic Cemeteries Association
10000 Miles Ave. Cleveland, Ohio
44105
216.641.7575
FAX: 216.641.0212

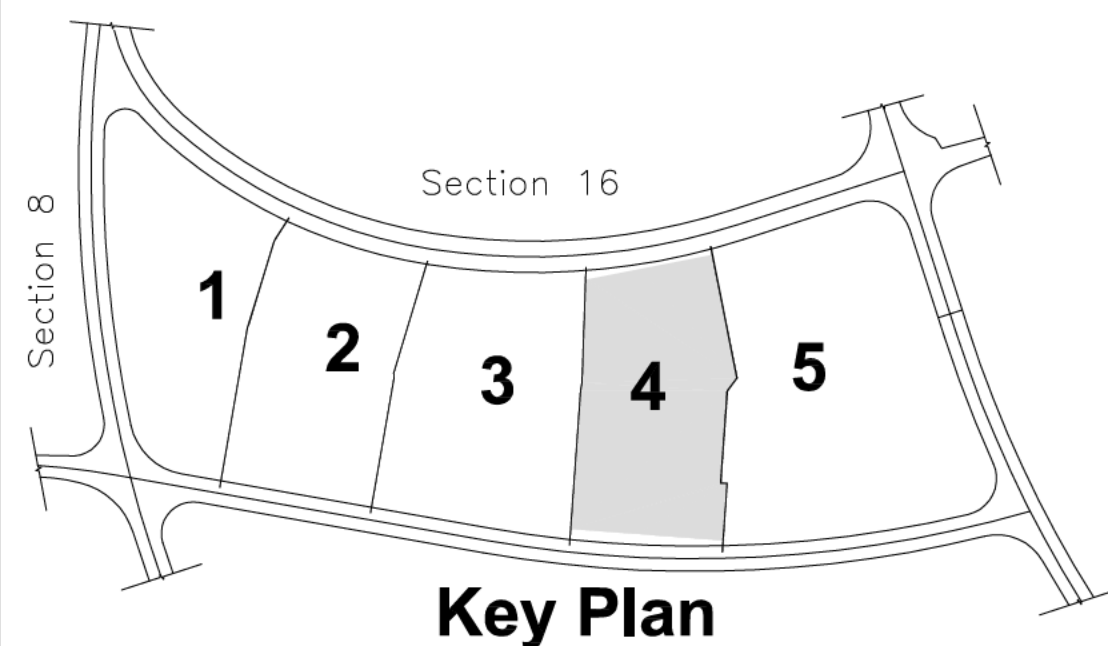
All Saints Cemetery - Northfield, Ohio
Section 17
Part 3

SHEET NAME:
DATE: 2.14.2006
PROJECT No.:

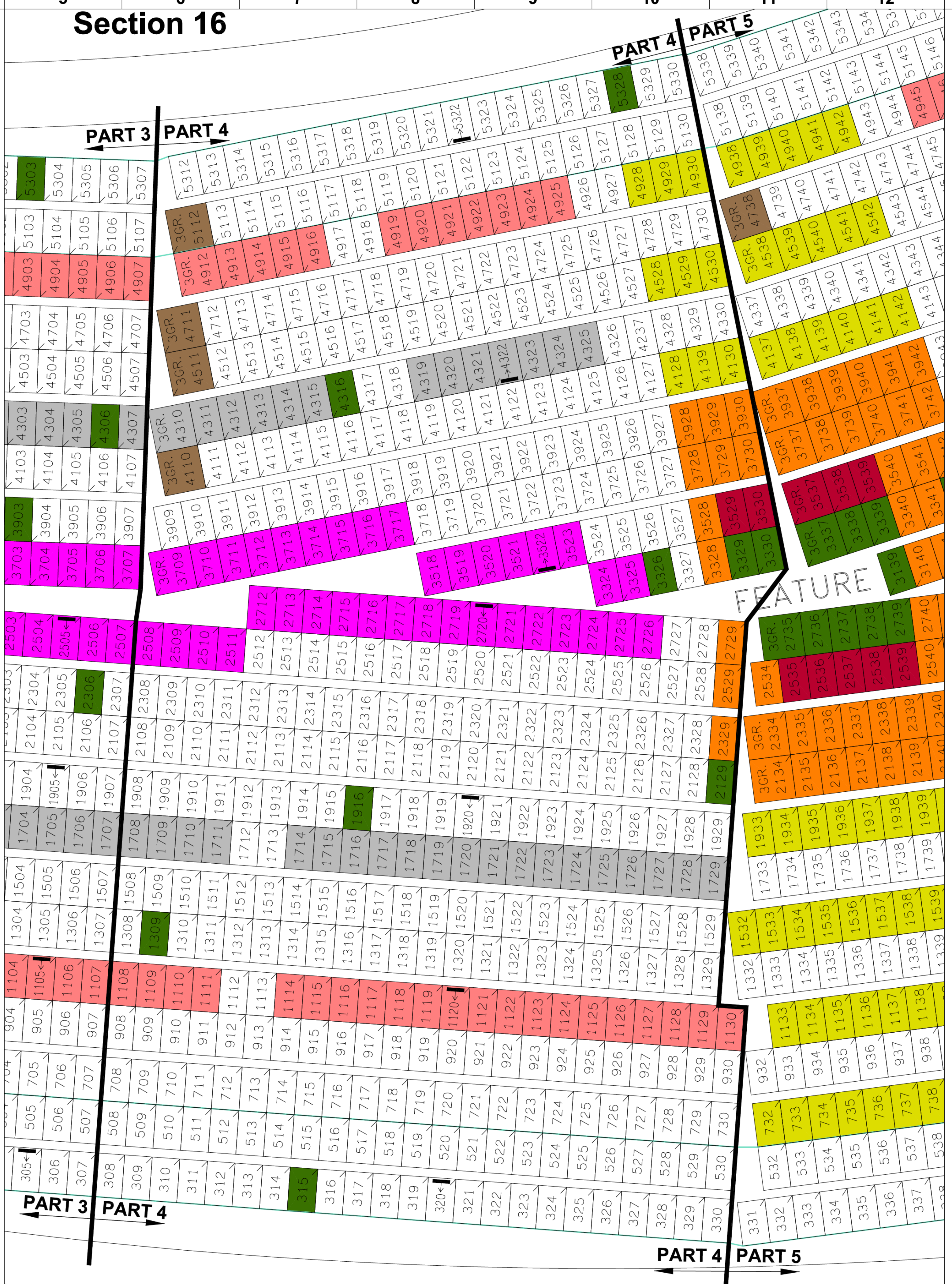
A1 SECTION 17 - PART 3

1"=20'





Section 16



SECTION NOTES

- THE LOT NUMBER IS PLACED IN THE UPPER RIGHT HAND CORNER OF THE LOT AS YOU FACE THE LOT AND IS INDICATED AS A SLASH OR TICK MARK.
- THE LOCATION OF GRAVE MARKERS ARE SHOWN BELOW WITH ARROW INDICATING DIRECTION GRAVE MARKERS WILL FACE.

↓
- ALL LOTS ARE 2-GRAVE LOTS UNLESS OTHERWISE NOTED ON THE DRAWING.
- ALL 2-GRAVE LOTS ARE 6'-4" X 10.0'
ALL 3-GRAVE LOTS ARE 9'-6" X 10.0'

LEGEND

- PREMIUM FEATURE LOT
- FEATURE LOT
- TREE/LANDSCAPE LOCATIONS
- 3 GRAVE LOT
- FLUSH MARKERS ONLY
- 28"-36" MONUMENTS
- 28"-42" MONUMENTS
- 28"-60" MONUMENTS
- 28"-72" MONUMENTS
- PILLOW MARKERS

MONUMENT NOTES

- MONUMENT LOTS ARE RESTRICTED TO THOSE AS SHOWN ON SECTION MAP.
- ALL MONUMENT LOTS ARE EITHER 2-GRAVE OR 3-GRAVE LOTS OTHER CONFIGURATIONS WILL BE DETERMINED AS REQUESTED.
- HEIGHT OF MONUMENTS ON DESIGNATED MONUMENT LOTS CAN VARY DEPENDING ON NUMBER OF GRAVES ASSOCIATED WITH MONUMENT REQUESTED.
- ALL FOUNDATIONS ARE LOCATED WITHIN LOTS.

LOT SUMMARY

424	2-GRAVE LOTS
7	3-GRAVE LOTS
2	PREMIUM FEATURE LOTS
11	FEATURE LOTS
444	TOTAL LOTS
895	TOTAL GRAVES

No. DATE REVISION

OFFICE OF DEVELOPMENT
Catholic Cemeteries Association
10000 Miles Ave., Cleveland, Ohio
44105
216.641.7575
FAX: 216.641.0212

All Saints Cemetery - Northfield, Ohio
Section 17
Part 4

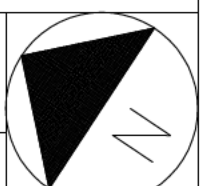
SHEET NAME:

DATE: 2.14.2006

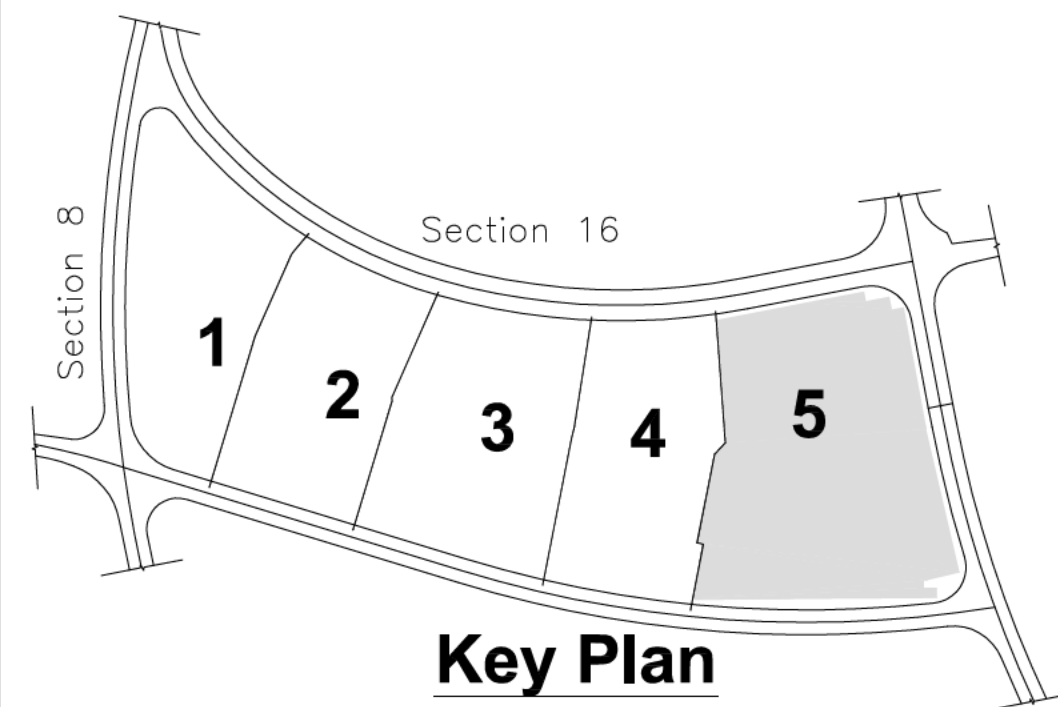
PROJECT No.:

A1 SECTION 17 - PART 4

1"=20'

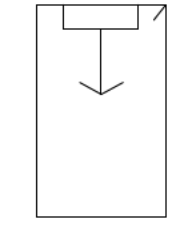


Section 16



SECTION NOTES

- 1 THE LOT NUMBER IS PLACED IN THE UPPER RIGHT HAND CORNER OF THE LOT AS YOU FACE THE LOT AND IS INDICATED AS A SLASH OR TICK MARK.
- 2 THE LOCATION OF GRAVE MARKERS ARE SHOWN BELOW WITH ARROW INDICATING DIRECTION GRAVE MARKERS WILL FACE.
- 3 ALL LOTS ARE 2-GRAVE LOTS UNLESS OTHERWISE NOTED ON THE DRAWING.
- 4 ALL 2-GRAVE LOTS ARE 6'-4" X 10.0'
ALL 3-GRAVE LOTS ARE 9'-6" X 10.0'



LEGEND

- 3676 PREMIUM FEATURE LOT
- 3875 FEATURE LOT
- 4077 TREE/LANDSCAPE LOCATIONS
- 3GR. 3880 3 GRAVE LOT
- 288 488 FLUSH MARKERS ONLY
- 205 28"-36" MONUMENTS
- 3305 28"-42" MONUMENTS
- 2733 28"-60" MONUMENTS
- 1904 28"-72" MONUMENTS
- 2856 PILLOW MARKERS

MONUMENT NOTES

- 1 MONUMENT LOTS ARE RESTRICTED TO THOSE AS SHOWN ON SECTION MAP.
- 2 ALL MONUMENT LOTS ARE EITHER 2-GRAVE OR 3-GRAVE LOTS OTHER CONFIGURATIONS WILL BE DETERMINED AS REQUESTED.
- 3 HEIGHT OF MONUMENTS ON DESIGNATED MONUMENT LOTS CAN VARY DEPENDING ON NUMBER OF GRAVES ASSOCIATED WITH MONUMENT REQUESTED.
- 4 ALL FOUNDATIONS ARE LOCATED WITHIN LOTS.

LOT SUMMARY

713	2-GRAVE LOTS
11	3-GRAVE LOTS
7	2-GRAVE PREMIUM FEATURE LOTS
1	3-GRAVE PREMIUM FEATURE LOTS
41	2-GRAVE FEATURE LOTS
4	3-GRAVE FEATURE LOTS
777	TOTAL LOTS
1570	TOTAL GRAVES

No.	DATE	REVISION

OFFICE OF DEVELOPMENT
Catholic Cemeteries Association
10000 Miles Ave., Cleveland, Ohio
44105
216.641.7575
FAX: 216.641.0212

All Saints Cemetery - Northfield, Ohio
Section 17
Part 5

SHEET NAME:
DATE: 2.14.2006
PROJECT No.:

A1 SECTION 17 - PART 5

1"=20'

